

16

Eastcheap

Floor plans

~

Ground




4,576 sq. ft | 425 sq. m



16

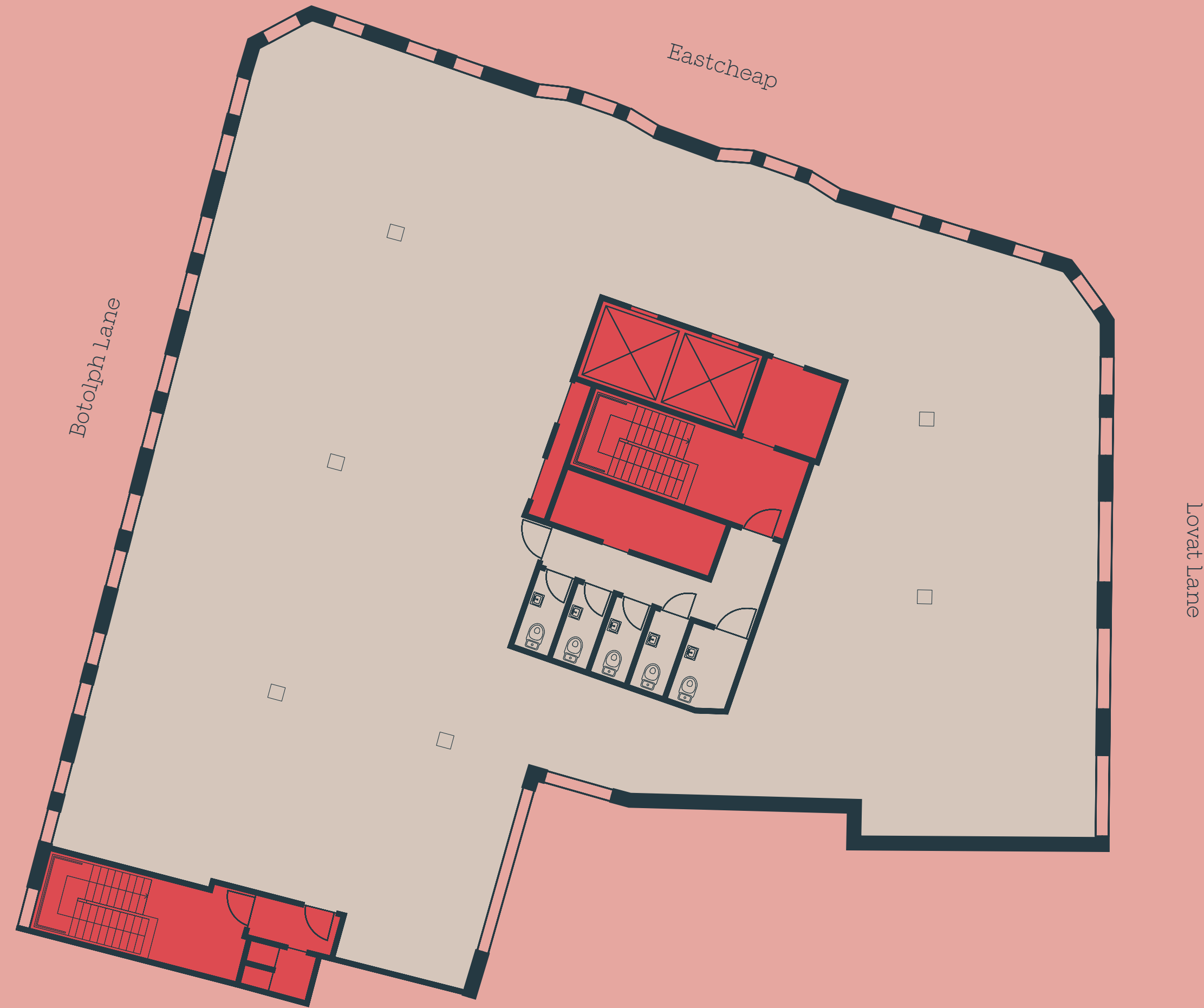
Eastcheap

Key

	Office		Core
	Reception		Terrace

First Floor

5,951 sq. ft | 553 sq. m



16

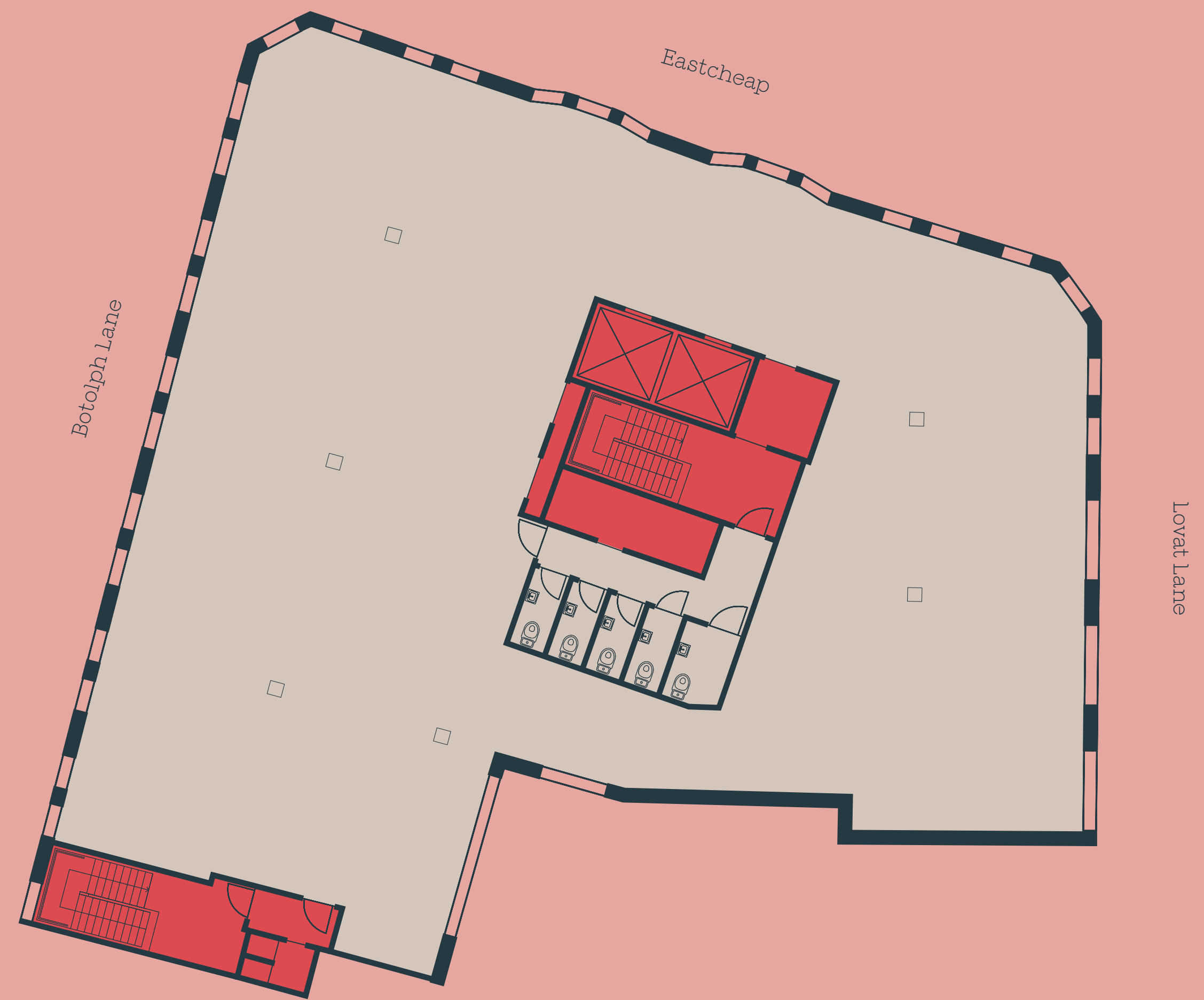
Eastcheap

Key

- Office
- Core
- Reception
- Terrace

Second Floor





5,879 sq. ft | 546 sq. m



16

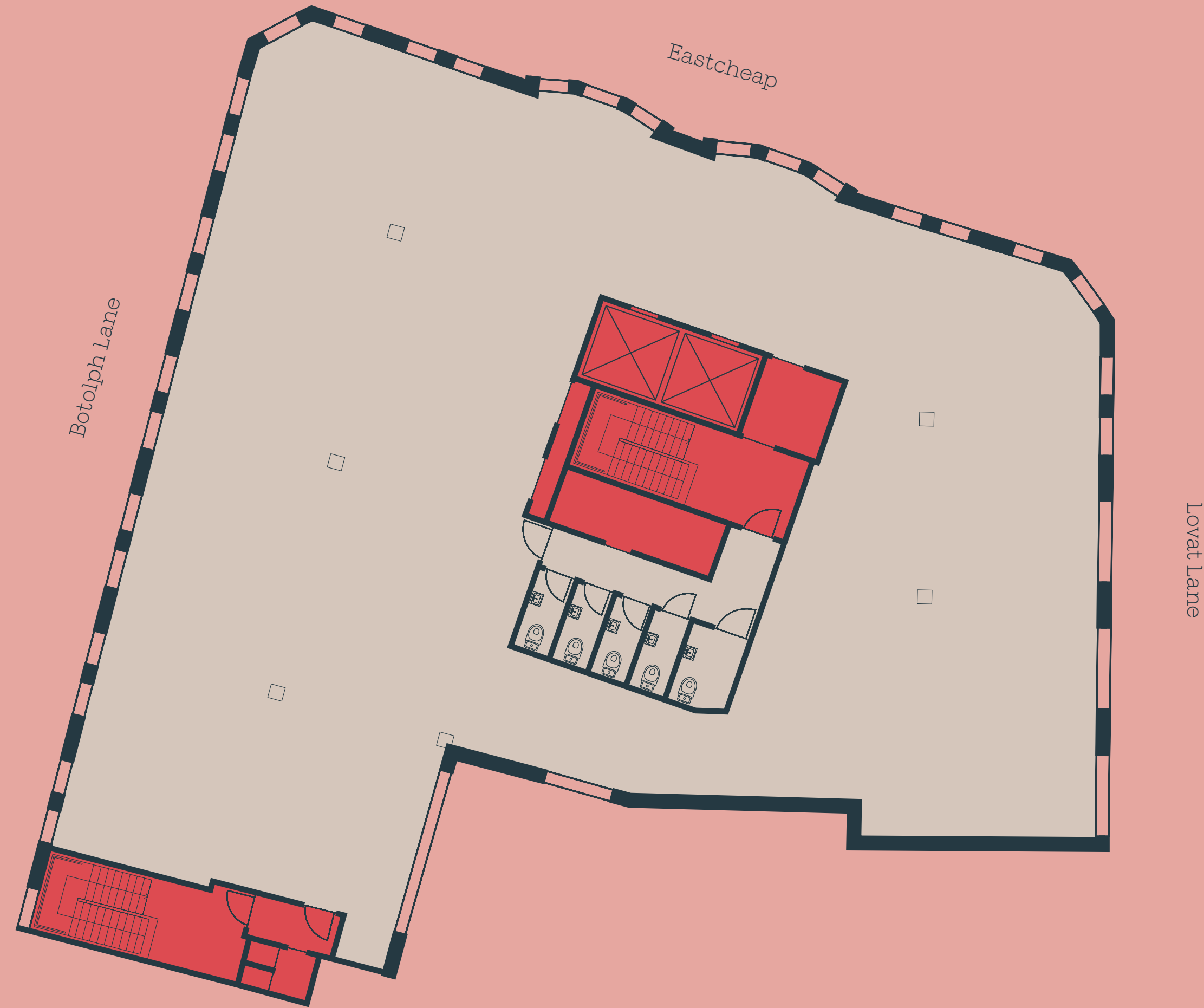
Eastcheap

Key

 Office	 Core
 Reception	 Terrace

Third Floor

5,790 sq. ft | 538 sq. m



16

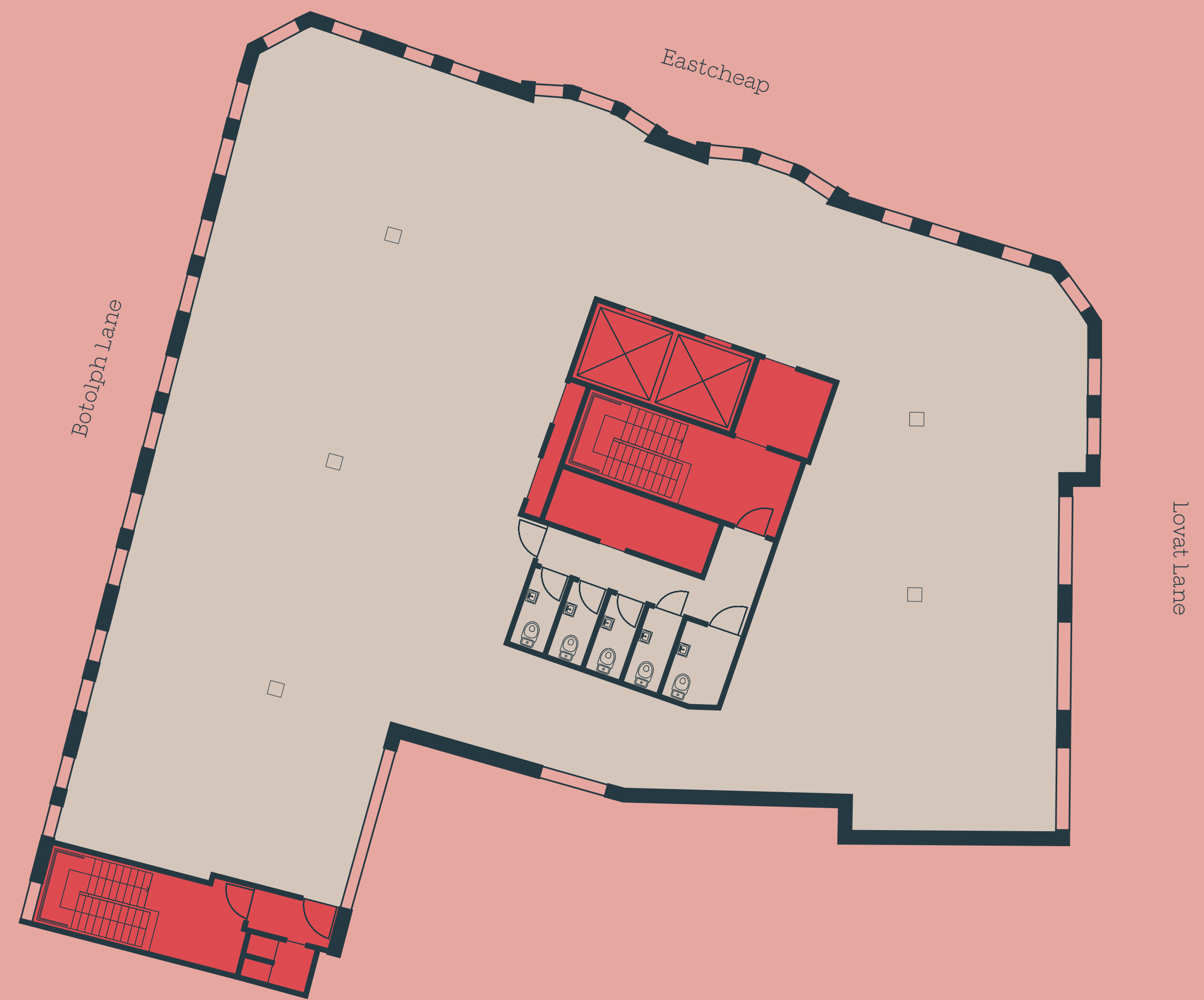
Eastcheap

Key

- Office
- Core
- Reception
- Terrace

Fourth Floor

5,548 sq. ft | 515 sq. m



16

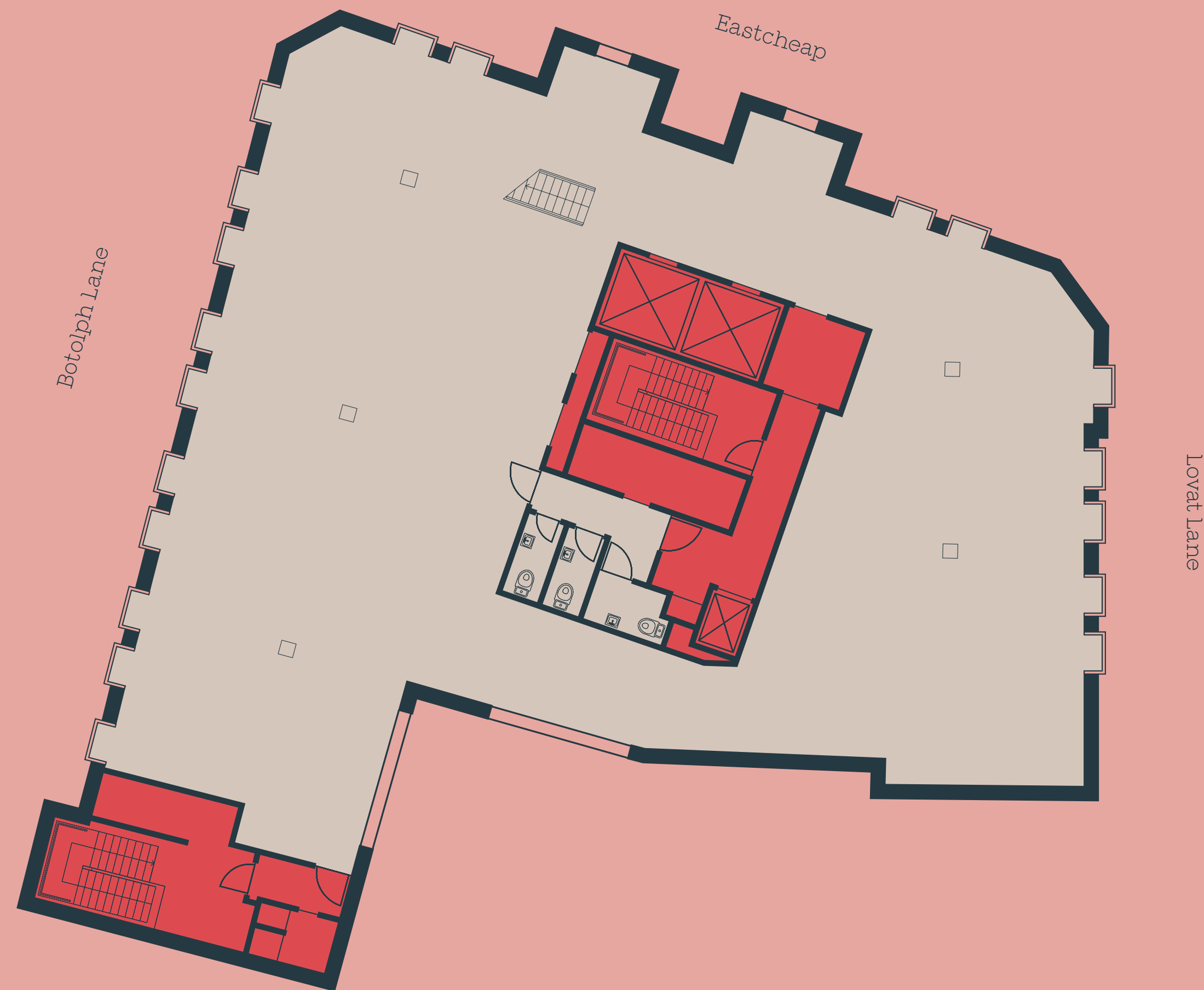
Eastcheap

Key

 Office	 Core
 Reception	 Terrace

Fifth Floor

4,449 sq. ft | 413 sq. m



16

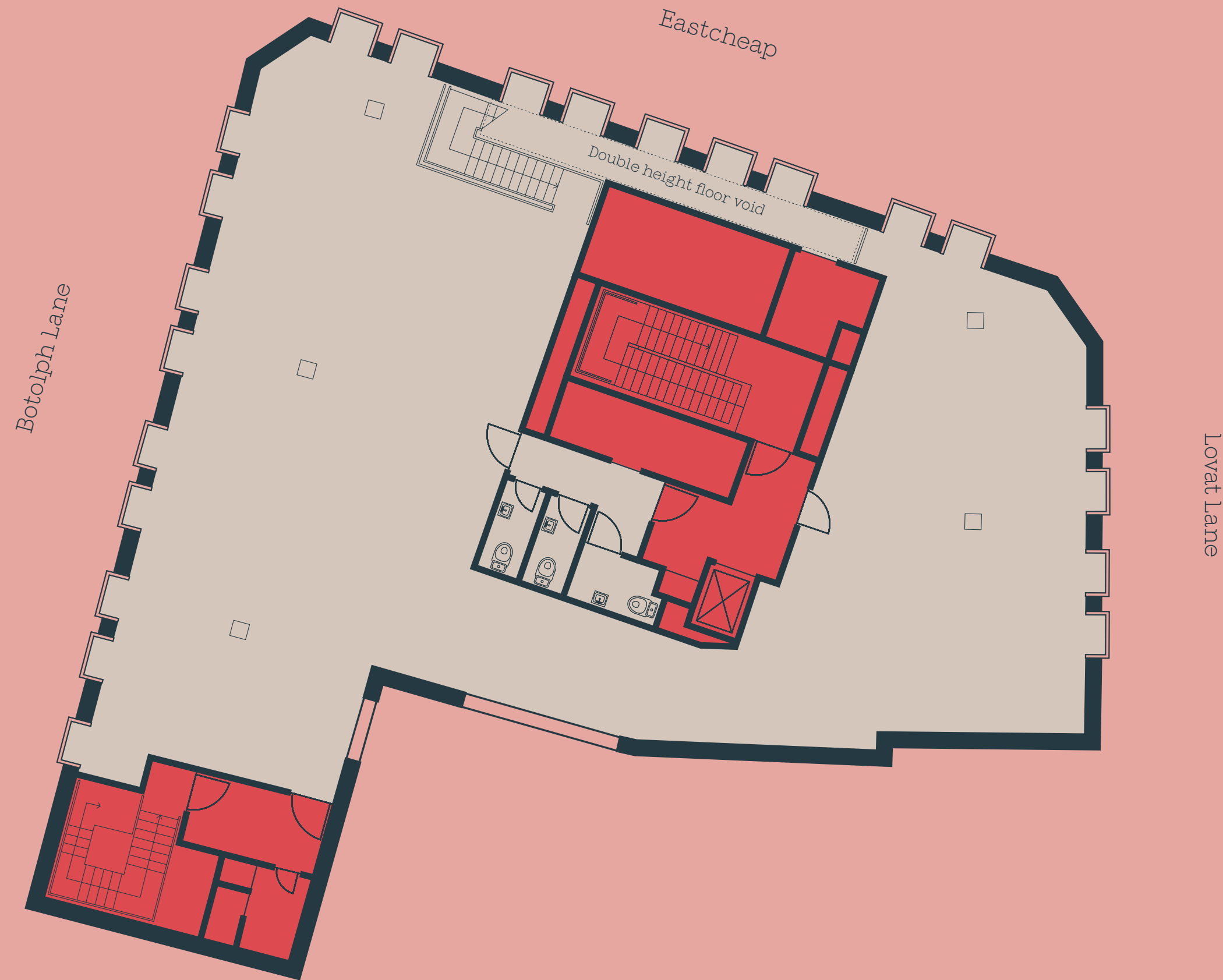
Eastcheap

Key

	Office		Core
	Reception		Terrace

Sixth Floor



2,924 sq. ft | 272 sq. m



16

Eastcheap

Key

	Office		Core
	Reception		Terrace

Roof




1,022 sq. ft | 95 sq. m



16

Eastcheap

Key

- | | | | |
|---|-----------|---|---------|
|  | Office |  | Core |
|  | Reception |  | Terrace |