

16

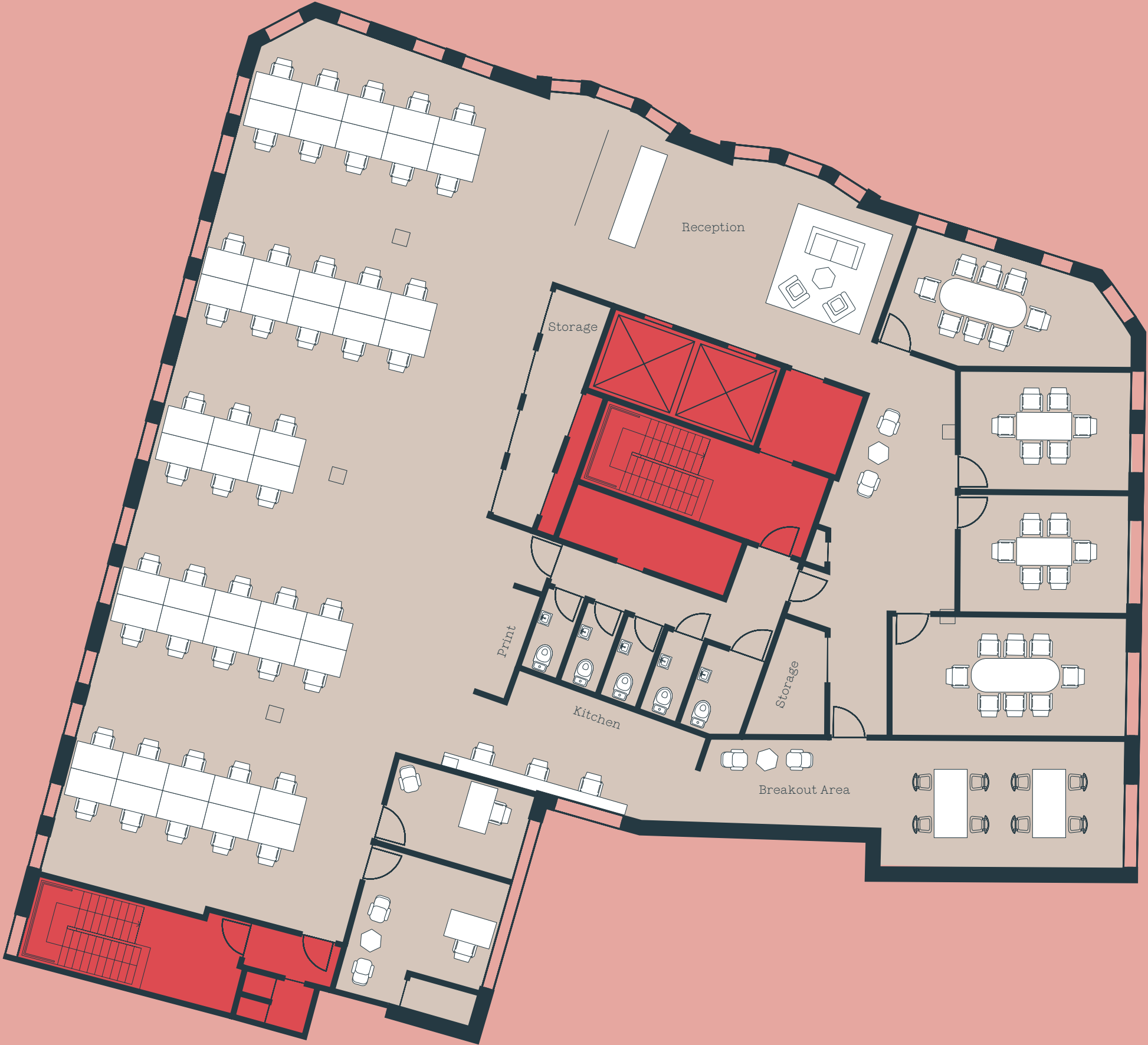
Eastcheap

Space plans

~

Option One ~ Corporate Layout

- Typical Floor 5,888 sq. ft / 547 sq. m
- Occupancy ratio 1:12 sq. m
 - 38 Workstations
 - 8 Agile workspaces



16

Eastcheap

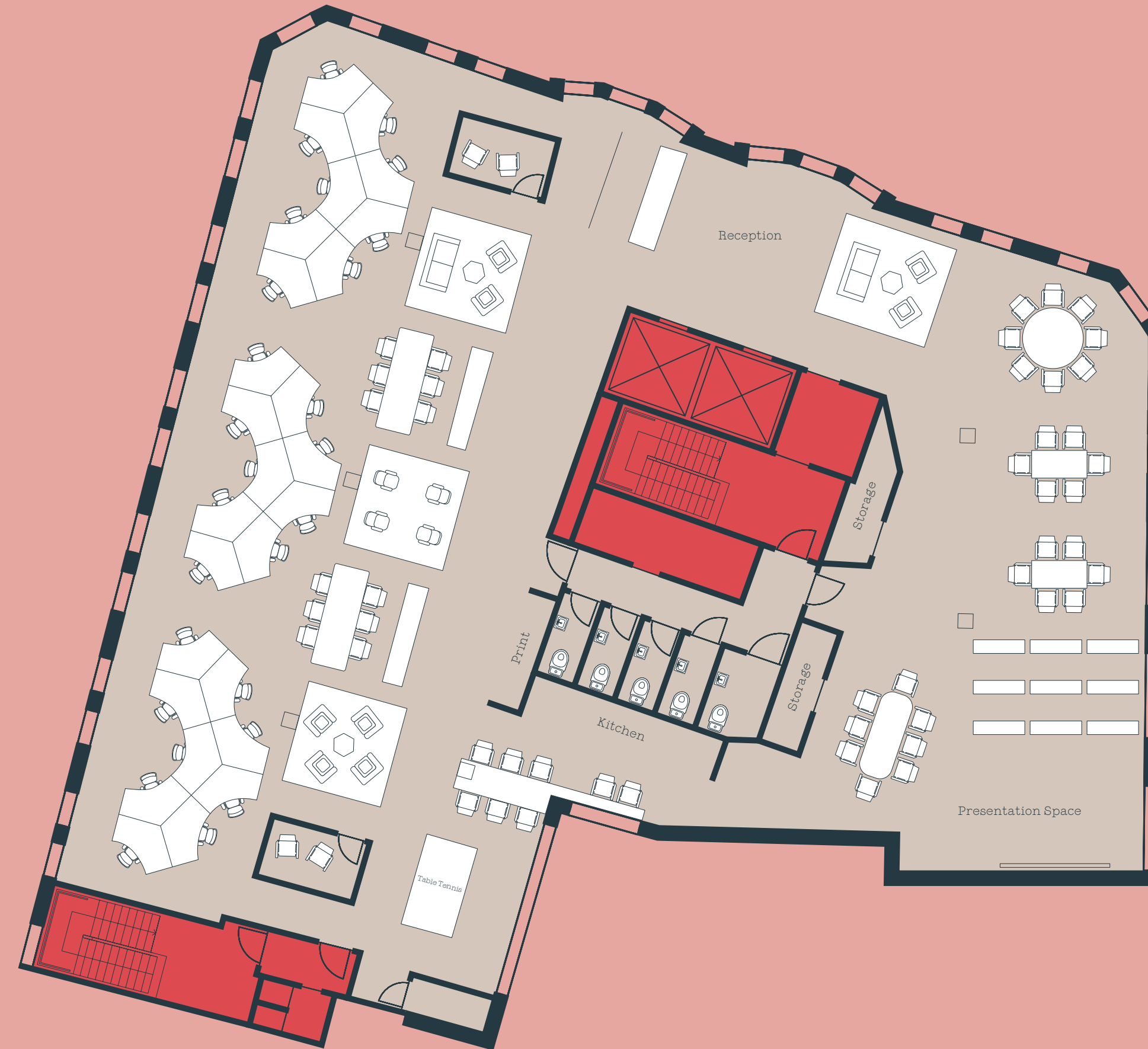
Plans for indicative purposes only

Key

	Office		Core
---	--------	---	------

Option Two ~ Creative Layout

- Typical Floor : 5,888 sq. ft / 547 sq. m
- Occupancy ratio 1:8 sq. m
 - 27 Workstations
 - 42 Agile workspaces



16

Eastcheap

Plans for indicative purposes only

Key

	Office		Core
---	--------	---	------